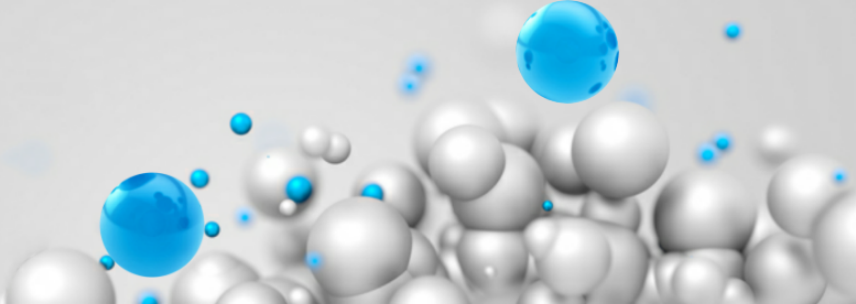




MKB INTERNATIONAL EXPORTS

A World of Quality Products.



C-150L



CHEMICAL PROPERTIES

SiO ₂	55-60%
Al ₂ O ₃	33-40%
CaO	0.1-0.4%
Fe ₂ O ₃	1-2%
TiO ₂	0.8-1.3%
K ₂ O	1-3.3%
N ₂	30%
MgO	0.1- 2.4%
Na ₂ O	0.2 - 0.6%
Co ₂	70%
N	30%



PHYSICAL PROPERTIES

Specific Gravity(Kg/m ³)	750 - 900
Bulk Density(Kg/m ³)	350 - 450
Particle Size Distribution	5-150 micron
Compressive Strength (Kg/cm ²)	180 - 280
Sinkers	3- 5 % MAX
Color	Light Grey – Light Buff
Melting Point	1200 - 1300°C
pH in water	6 - 8
Moisture	1 % MAX (+/- 1%)
Thermal Conductivity	0.11 w/mk
Hardness (MOH)	5 - 6
Packing Factor	60 - 65%
Shape	spherical
Wall Thickness	5 - 10% of shell diameter
Loss on ignition	2 % MAX
Oil Absorbion	16 - 18 G/100G



SIEVE ANALYSIS (MICRON)

+60 # 250 µm	+100 # 150 µm	+150 # 106 µm	-240 # 63 µm	-240 # 63 µm
0%	0%	0 - 5%	60 - 95%	0 - 20%

Note : The above value may change as per raw materials procurement and figures do not show 100% accuracy.